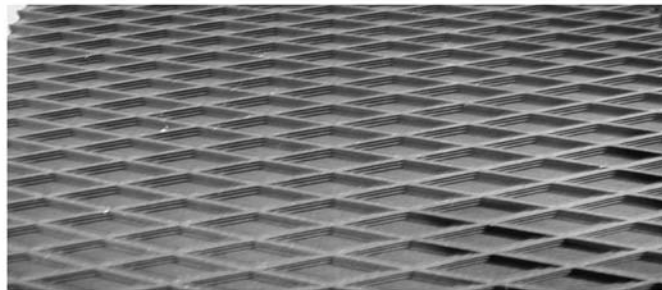


# Feed Handling Equipment Replacement Belts

**CLEATED, ROUGHTOP, AND DIAMOND TOP CONSTRUCTIONS ARE AVAILABLE FOR HAYSTACKER , TUB GRINDER , AND BUNK FEEDER BELTS**

Legg's 2 ply discharge belt is the best money can buy. INTEGRALLY MOLDED cleats insure they will not come off. 2 Ply 100% Polyester carcass insures years of service without the chance of rot or stretch S & Z Twist fabric for the ultimate tracking experience. You'll Love It !!!



The 2 Ply 100% Polyester Carcass is also available with a DIAMOND TOP AND ROUGH TOP COVER.

<b>HAYSTACKER BELTS</b>			
<b>O.E.M.</b>	<b>MFG</b>	<b>Belt</b>	<b>Legg CO. Part #</b>
<b>Make and Model</b>	<b>PART</b>	<b>Size</b>	<b>2PLY</b>
	<b>NUMBER</b>	<b>Inches</b>	<b>1/2" Hi Cleats</b>
<b>HAYBUSTER - "STAK - EZE"</b>			
<b>1400, 1600, 1800, 618 STAKER</b>			
	10-0-36-16.6	36 x 198	HB165KS
	1700002	36 x 214	HB178KS
	1700004	36 x 303	HB253KS
	1700005	36 x 309	HB259KS
	1700011 (Dutchman)	36 x 3	HB363KS
	1700012 (Dutchman)	36 x 6	HB366KS
	1700014 (Cable Pin)	36 w/5.5 wire leader	HB350KS
	1700015 (Cable Pin)	36 w/36 wire leader	HB351KS

## TUB GRINDER BELTS

OEM	MFG	Belt	Legg	SPECIFY CONSTRUCTION		
Make and Model	Part	Size	CO.	2ply Cleat	2ply RT	2ply DT
	#	Inches	Part #	1 1/2"	Rough Top	Diam. Top
<b>BEARCAT</b>						
		24 x 535	BC180-L	-	R	D
<b>C.W.</b>						
<b>#P-1142</b>						
Top Conveyor		24 x 537	CW247-L	-	R	D
Bottom Conveyor		24 x 281	CW241-L	-	R	D
<b>E-Z</b>						
Top Conveyor		18 x 540	UN180-L	S	R	D
Bottom Conveyor		18 x 120	UN181-L	S	R	D
<b>FARMHAND</b>						
<b>F-880A, F-880B, F-890B, XG30</b>						
	1A88611	18 x 399	UN182-L	S	R	D
<b>F-891A, XG40</b>						
(Notched Cleats)	1A62063	18 x 495	FH495-L	S	R	D
		18 x 294	FH294-L	S	R	D
<b>F-900, F900A</b>						
	1A88021	18 x 540	UN180-L	S	R	D
<b>F-900B, XG50</b>						
	1A88631	18 x 584	UN183-L	S	R	D
<b>XG50 - Under Mill Belt 1" Hi cleat on 12" Centers With B Section V-Guide</b>						
(Bottom)	1A61785	20 x 110	FH110-L	S	-	-
<b>910, 1010</b>						
	1A12110	24 x 584	FH182-L	S	R	D
<b>6650, F892A Elevator</b>						
	1A62789	22 x 540	FH180-L	S	R	D
<b>6650 - Under Mill Belt 3/4" Hi cleat on 12" Centers With B Section V-Guide</b>						
(Bottom)		24 x 97	FH097-L	S	-	-
<b>HAYBUSTER</b>						
<b>H-900, H-1000, C9, C10</b>						
	1700001	16 x 472	HB165-L	S	R	D
Recessed Cleat	1700033	16 x 472	HB163-L	S	R	D
<b>H-1000</b>						
	1700017	18 x 472	HB182-L	S	R	D
Recessed Cleat	1700003	18 x 472	HB183-L	S	R	D
<b>H-1100, C-11-C</b>						
	1700010	18 x 522	HB184-L	S (3/4")	R	D
	1700006	18 X 522	HB185-L	S	R	D

## TUB GRINDER BELTS

OEM	MFG	Belt	Legg	SPECIFY CONSTRUCTION		
Make and Model	Part	Size	CO.	2ply Cleat	2ply RT	2ply DT
	#	Inches	Part #	1 1/2"	Rough Top	Diam. Top
<b>HAYBUSTER CONTINUED</b>						
<b>H-1100, C-11-C - Cleats are 3/4" Hi and are recessed 2" on both ends</b>						
Belly Apron	1700008	24 x 216	HB248-L	S (3/4")	R	D
Belly Apron (1/8" OAG)	1700007	30 x 216	HB308-L	S (3/4")	-	-
Belly Apron (1/4" OAG)	1700031	30 x 216	HB309-L	S (3/4")	-	-
<b>INTERNATIONAL HARVESTER (IH)</b>						
	725-72758-C1	18 x 399	UN182-L	S	R	D
	750-64302-C91	18 x 540	UN180-L	S	R	D
<b>JONES</b>						
<b>MIGHTY GIANT - Cleats are 3/4"</b>						
		20 x 696	JM206-L	S (3/4")	R	D
		24 x 690	JM207-L	S (3/4")	R	D
<b>NEW HOLLAND</b>						
<b>390, 391, 393</b>						
		18 x 399	UN182-L	S	R	D
<b>395</b>						
		18 x 540	UN180-L	S	R	D
<b>396</b>						
		18 x 584	UN183-L	S	R	D
<b>OSWALT</b>						
		18 x 540	UN180-L	S	R	D
		18 x 120	UN181-L	S	R	D
<b>TUB MASTER</b>						
		21 x 535	TM215-L	-	R	D
<b>W.H.O.</b>						
<b>Top Conveyor</b>						
		20 x 634	WH201-L	S	R	D
<b>Bottom Conveyor</b>						
		24 x 262	WH241-L	S	R	D
<b>PP 56 Elevator</b>						
		20 x 626	WH251-L	S	R	D

For lacing, tools, and accessories, refer to accessories section



TO ORDER CALL FREE: **I-800-835-1003**  
 FREE IN KANSAS: **I-866-830-1003**  
 1-316-835-2256 • FAX: 1-316-835-3218

**LEGG COMPANY, INC., 325 E. 10th Street, Halstead, Kansas 67056**

## BUNK FEEDER WAGON BELTS

OEM	MFG	Belt	Legg	SPECIFY CONSTRUCTION		
Make and Model	Part	Size	CO.	2ply Cleat	2ply RT	2ply DT
DESCRIPTION	#	Inches	Part #	3/8" Hi	Rough Top	Diam. Top
<b>CASE - HELIX</b>						
Apron	B305A	21 x 161.5	HE000-B	S	R	D
Apron Extension	B429	21 x 81.25	HE950-B	S	R	D
<b>FARM HAND</b>						
Apron	A-7016-4	18 x 172.5	FH000-B	S	R	D
Apron	F36A	24 x 180	FH001-B	-	R	D
<b>GEHL</b>						
<b>BU83, BU710</b>						
Apron	B11039A	19.5 x 177.75	GB000-B	S	R	D
<b>BU85</b>						
Apron	B11039D	19.5 x 173.75	GB001-B	S	R	D
Apron		19.5 x 192	GB002-B	S	R	D
<b>BU81</b>						
Apron Extension	B11200	19.5 x 88	GB950-B	S	R	D
Dutchman	B11281	19.5 x 3	GB940-B	S	R	D
<b>450-400</b>						
Re-Chopper Apron	Y15064A	19.5 x 89.5	GB900-B	S	R	D
Smooth Belt	Y15039					
<b>GROVE</b>						
Apron	F3-20-6	20 x 196.5	GR000-B	S	R	D
Apron Extension	F3-40-8	20 x 72	GR950-B	S	R	D
Shield (Smooth)	F3-20-42	2.5 x 98	GR980-B	S	-	-
<b>INTERNATIONAL HARVESTER (IH)</b>						
Apron	477-409-R12	20 x 155	IH000-B	S	R	D
Apron Extension	477-771-R11	20 x 20	IH950-B	S	R	D
Rigid Extension	461-612-R11	20 x 85	IH951-B	S	R	D
Apron	458-181-R11	20 x 182	IH610-B	S	R	D

### BUNK FEEDER SYSTEMS

Legg Company has a full line of replacement belts for bunk feeding systems including: Harvestore, Farm-EZE, Clay, and many others. For pricing information, Call Legg today with you size, make and model.

### FORAGE BLOWER BELTS

Legg Company has a full line of replacement belts for forage blowers including: Allis - Chalmers, IHC, John Deere, Papec, and many more. For more information Call Legg Company with you size, make, and model today! 1-800-835-1003

### FORAGE HARVESTER BELTS

Legg Company has a full line of replacement belts for Forage Harvesters including: Allis - Chalmers, Case, Massey Harris, New Holland, and many more. For Pricing Information call Legg today. 800-835-1003

## BULK TUB GRINDER BELTS

ROLLS OF BULK BELTING	Belt Size Inches	Legg CO. Part #	SPECIFY CONSTRUCTION		
			2-Ply Clt. (1.5")	2-Ply RT	2-Ply DT
Minimum order 50 ft.	16" Wide	LG160-	TS	LR	LD
Cleated - Bulk 1.5" High Cleats	18" Wide	LG180-	TS	LR	LD
12" Centers full width	20" Wide	LG200-	TS	LR	LD
	21" Wide	LG210-	TS	LR	LD
	22" Wide	LG220-	TS	LR	LD
	24" Wide	LG240-	TS	LR	LD
* 30" Wide Bulk Belt Has 3/4" High Cleats	30" Wide	LG300-	* TS (3/4')	LR	LD

## BUNK FEEDER BELT BULK

ROLLS OF BULK BELTING	Belt Size Inches	Legg CO. Part #	SPECIFY CONSTRUCTION		
			2-Ply Clt. (3/8")	2-Ply RT	2-Ply DT
Minimum order 50 ft.	18" Wide	LG180-	BS	LR	LD
Cleated - Bulk 3/8" High Cleats	19.5" Wide	LG195-	BS	LR	LD
12" Centers full width	20" Wide	LG200-	BS	LR	LD
	21" Wide	LG210-	BS	LR	LD
	24" Wide	LG240	-	LR	LD



**TO ORDER CALL FREE: 1-800-835-1003**  
**FREE IN KANSAS: 1-866-830-1003**  
 1-316-835-2256 • FAX: 1-316-835-3218

**LEGG COMPANY, INC., 325 E. 10th Street, Halstead, Kansas 67056**