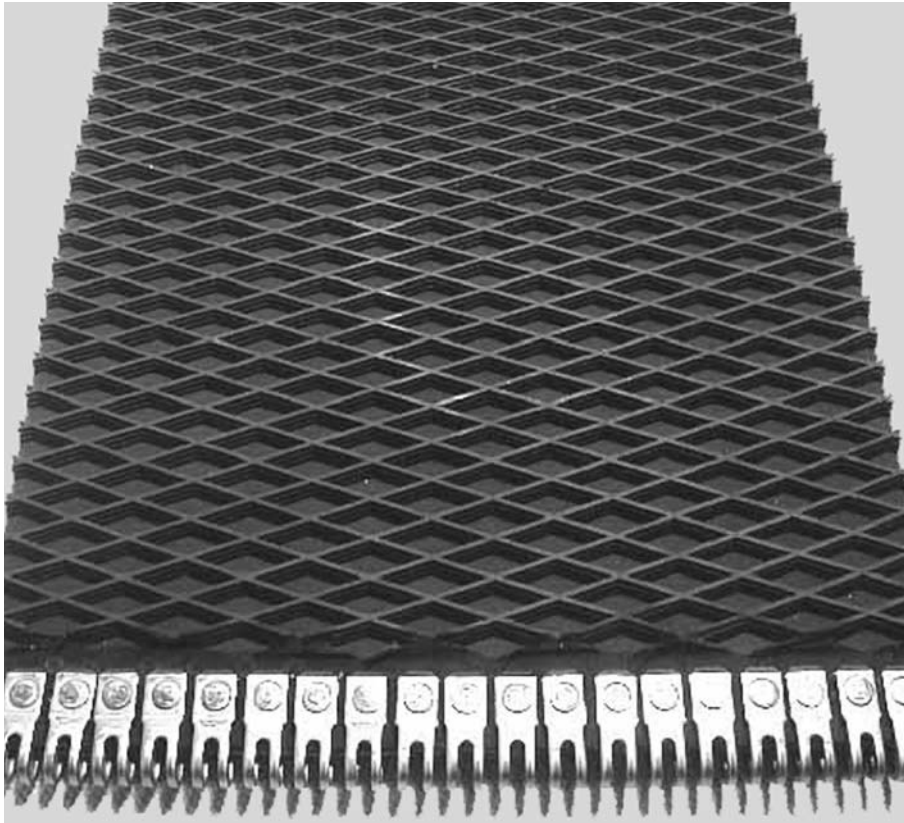


3-PLY BALER BELT

Nylon/Polyester - Polyester/Polyester - Nylon/Polyester Construction

LEGG COMPANY'S field proven baler belting. The nylon/polyester outer plies, coupled with the all polyester inner ply, makes this truly an exceptional baler belt. Our most popular belt is now available in a Diamond Top Impression. This three ply belt is designed specifically with today's high density baler and heavy users in mind. It's innovative design provides the ultimate in flexibility, strength, and tracking, all with minimal stretch. The outer plies have a nylon length yarn and a polyester cross yarn to provide for exceptional flex life going around the rollers, but maintains stiffness across the belt to prevent roll over. The inner ply is an all polyester ply for minimum belt elongation. Improved rubber covers and fabrics increase hook holding ability and are designed to withstand the extreme flexing belts must undergo in large round balers. All three of the plies are



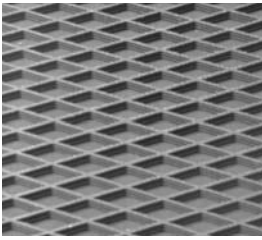
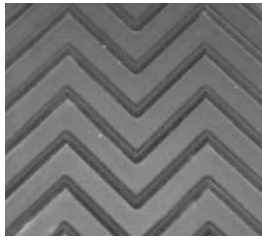
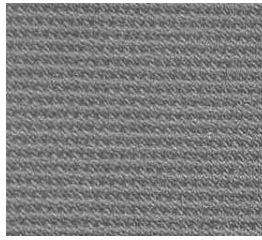
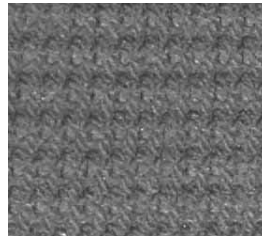
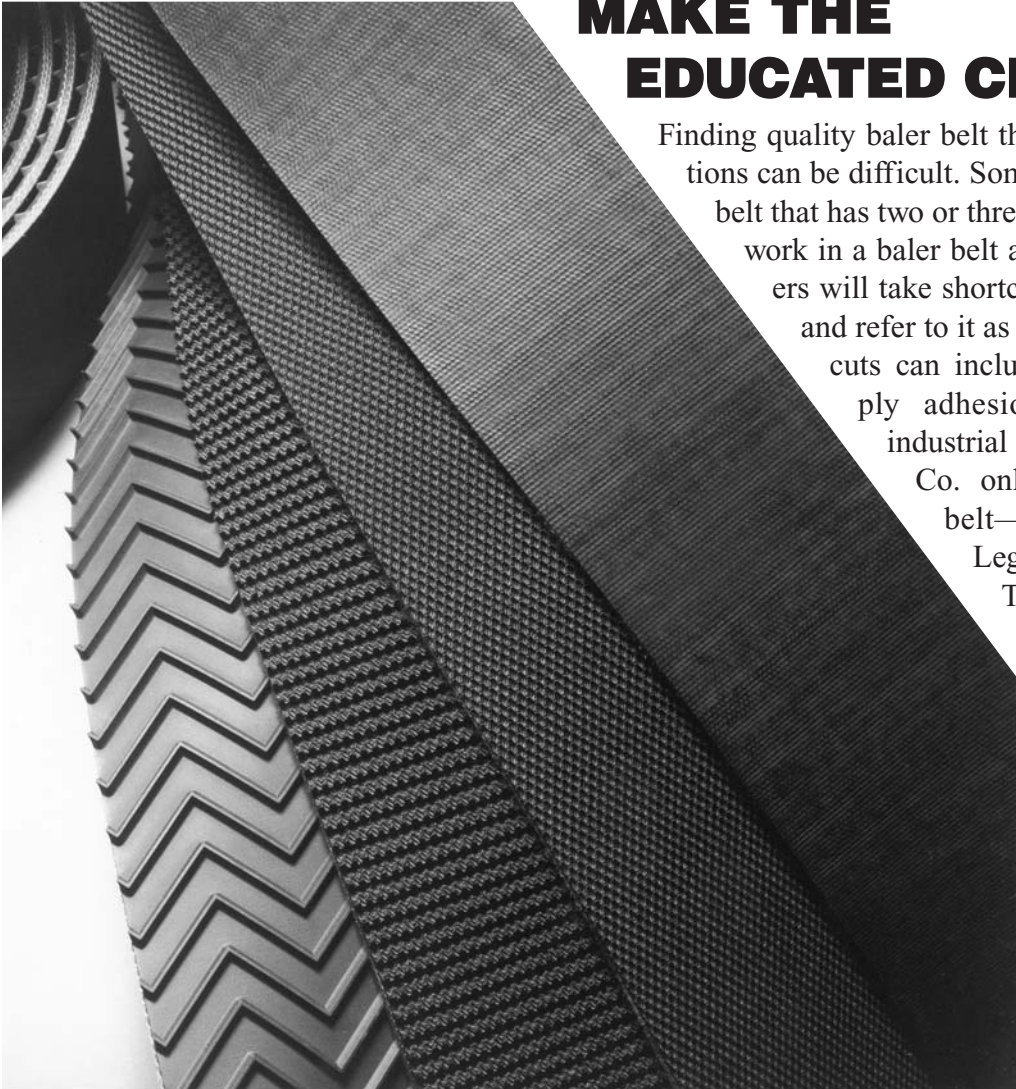
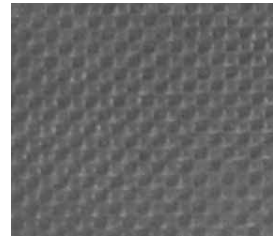
S & Z twist for the ultimate in belt tracking. Available with textured covers, or with Legg's Mini - Roughtop, Roughtop, Chevron, and **DIAMOND TOP CONSTRUCTION**.

Legg's field proven baler belt achieves superior performance by utilizing high quality compound between plies, (skims) to allow the plies to easily shift as the belts travel over the rollers. High ozone and oxidation inhibitors in the cover compounds, along with high abrasion resistance, provide for years of wear from your Legg baler belts. The low stretch, 100% polyester inner ply provides for very high tension ratings in Legg's baler belts. Assuring years of trouble free running without significant stretch with stable tracking characteristics.



TO ORDER CALL FREE: **1-800-835-1003**
FREE IN KANSAS: **1-866-830-1003**
1-316-835-2256 • FAX: 1-316-835-3218

LEGG COMPANY, INC., 325 E. 10th Street, Halstead, Kansas 67056

Diamond Top**Chevron****Mini Rough Top****Rough Top****Smooth**

MAKE THE EDUCATED CHOICE

Finding quality baler belt that can withstand harsh conditions can be difficult. Sometimes the end user looks at a belt that has two or three plies and assumes that it will work in a baler belt application. Some manufacturers will take shortcuts when producing baler belt and refer to it as "Economy Line." These shortcuts can include a lightweight fabric, poor ply adhesions, cheap compound, and industrial fabric used as baler belt. Legg Co. only offers one level of baler belt—premium, quality belting.

Legg Co. does not take shortcuts. The end user can be assured that they will receive a baler belt that will provide excellent bale start-up, while withstanding the demands of the field environment.

Available in pre-cut and laced replacement belts or bulk rolls for maximum flexibility and cost savings.



TO ORDER CALL FREE: **1-800-835-1003**
 FREE IN KANSAS: **1-866-830-1003**
 1-316-835-2256 • FAX: 1-316-835-3218

LEGG COMPANY, INC., 325 E. 10th Street, Halstead, Kansas 67056

BALER BELTING

* DESIGNATE LACING CHOICE AFTER PART NUMBER												
1 = FLEXCO RIVET LACING					Available for Upper and Lower Balers 14" Wide or Narrower							
2 = CLIPPER LACING					Available for Upper and Lower Balers							
3 = FLEXCO 125 STAPLE LACE					Available for Upper and Lower Balers							
4 = 2-A MINET LACING					Available for Upper and Lower Balers							
ROUND BALER BELT					* PART NUMBERS							
MAKE &	BELT	BELT	#	LEGG	SPECIFY CONSTRUCTION							
MODEL	DESCR-	SIZE	Belts	COMPANY	2ply	2ply	3ply	3ply	3ply	3ply	3ply	
	PTION	INCHES		PART #	SM	MRT	SM	MRT	RT	Chev	DT	
ALLIS CHALMERS - Roto Baler												
70509672	Upper	5.5 x 72	6	AC750A	F	FM	N	NM	NR	NC	ND	
70509673	Lower	5.5 x 102	6	AC700A	F	FM	N	NM	NR	NC	ND	
CASE / IH												
241 and 2400												
205810092	Upper	4 x 430	9	UN714-A	F	FM	N	NM	NR	NC	ND	
	Upper	10 x 430		UN753-A	F	FM	N	NM	NR	NC	ND	
Popular Belt Modification: (5) 4" x 430" Inside and (2) 10" x 430" Outside												
241 and 2400 w/out V-Guide Lower 2ply Belts W/V-GUIDE												
	Lower	60 x 121.85	1	IH700-A	F	-	-	-	-	C	-	
2400 w/Dual Springs												
	Upper	4 x 424	9	UN713-A	F	FM	N	NM	NR	NC	ND	
	Upper	10 x 424		UN752-A	F	FM	N	NM	NR	NC	ND	
3440												
ZA104107	Upper	11 x 73.25	12	UN768-A	F	FM	N	NM	NR	NC	ND	
ZA104712	Lower	11 x 103.5	4	UN772-A	F	FM	N	NM	NR	NC	ND	
3450 Early Model												
ZA104107	Upper	4.75 x 73.25	30	UN776-A	F	FM	N	NM	NR	NC	ND	
ZA104712	Lower	11 x 103.5	5	UN772-A	F	FM	N	NM	NR	NC	ND	
3450 Newer Model												
ZA105003	Upper	11 x 73.25	15	UN768-A	F	FM	N	NM	NR	NC	ND	
ZA104712	Lower	11 x 103.5	5	UN772-A	F	FM	N	NM	NR	NC	ND	
3640												
ZA104107	Upper	11 x 73.25	20	UN768-A	F	FM	N	NM	NR	NC	ND	
ZA104108	Lower	11 x 121.25	4	UN774-A	F	FM	N	NM	NR	NC	ND	
3650 Early Model												
ZA104107	Upper	4.75 x 73.25	55	UN776-A	F	FM	N	NM	NR	NC	ND	
ZA104108	Lower	11 x 121.25	5	UN774-A	F	FM	N	NM	NR	NC	ND	
3650 Newer Model												
ZA105003	Upper	11 x 73.25	25	UN768-A	F	FM	N	NM	NR	NC	ND	
ZA104108	Lower	11 x 121.25	5	UN774-A	F	FM	N	NM	NR	NC	ND	
8420												
700700802	Upper	4.8 x 364	5	UN710-A	-	-	N	NM	NR	NC	ND	
8430												
700709185	Upper	7 x 366	6	UN796-A	-	-	N	NM	NR	NC	ND	
8435												
	Upper	7 x 471.5	6	UN730-A	-	-	N	NM	NR	NC	ND	

For more information go to www.leggbelting.com or call toll free 800-835-1003 and ask for agricultural sales

BALER BELTING

* DESIGNATE LACING CHOICE AFTER PART NUMBER												
1 = FLEXCO RIVET LACING					Available for Upper and Lower Balers 14" Wide or Narrower							
2 = CLIPPER LACING					Available for Upper and Lower Balers							
3 = FLEXCO 125 STAPLE LACE					Available for Upper and Lower Balers							
4 = 2-A MINET LACING					Available for Upper and Lower Balers							
ROUND BALER BELT					* PART NUMBERS							
MAKE &	BELT	BELT	#	LEGG	SPECIFY CONSTRUCTION							
MODEL	DESCR-	SIZE	Belts	COMPANY	2ply	2ply	3ply	3ply	3ply	3ply	3ply	
	PTION	INCHES		PART #	SM	MRT	SM	MRT	RT	Chev	DT	
CASE / IH CONTINUED												
8440												
700702917	Upper	4 x 452	9	UN712-A	-	-	N	NM	NR	NC	ND	
8450												
700707162	Upper	7 x 570	4	UN797-A	-	-	N	NM	NR	NC	ND	
700708740	Upper	6.5 x 572.5	2	UN798-A	-	-	N	NM	NR	NC	ND	
8455												
700709999	Upper	7 x 562.5	6	UN756-A	-	-	N	NM	NR	NC	ND	
8460 Early Model												
700707162	Upper	6.5 x 572.5	2	UN798-A	-	-	N	NM	NR	NC	ND	
700708740	Upper	7 x 570	6	UN797-A	-	-	N	NM	NR	NC	ND	
8460 Newer Model												
700709999	Upper	7 x 562.5	8	UN756-A	-	-	N	NM	NR	NC	ND	
8465												
700709999	Upper	7 x 562.5	8	UN756-A	-	-	N	NM	NR	NC	ND	
8480												
ZA105003	Upper	11 x 73.25	25	UN768-A	F	FM	N	NM	NR	NC	ND	
ZA104108	Lower	11 x 121.25	5	UN774-A	F	FM	N	NM	NR	NC	ND	
8450 - 8455 STARTER FLAPS												
8460 - 8465 STARTER FLAPS												
700711998		3.5 x 46.22	4	UN708-A	-	-	N	-	-	-	-	
700711997		3.5 x 61.18	4	UN709-A	-	-	N	-	-	-	-	
RS 451												
700716049	Upper	7 x 475	6	UN731-A	F	FM	N	NM	NR	NC	ND	
RS 451 STARTER FLAPS												
700716010		3.5 x 43.31		UN704-A	-	-	N	-	-	-	-	
RS 551												
700716049	Upper	7 x 475	6	UN731-A	F	FM	N	NM	NR	NC	ND	
RS 551 STARTER FLAPS												
788717714		3.5 x 58.5		UN705-A	-	-	N	-	-	-	-	
RS 561												
700717717	Upper	7 x 547	6	UN754-A	F	FM	N	NM	NR	NC	ND	
RS 561 STARTER FLAPS												
788717714		3.5 x 58.5		UN705-A	-	-	N	-	-	-	-	

For more information go to www.leggbelting.com or call toll free 800-835-1003 and ask for agricultural sales



TO ORDER CALL FREE: 1-800-835-1003
FREE IN KANSAS: 1-866-830-1003
 1-316-835-2256 • FAX: 1-316-835-3218

LEGG COMPANY, INC., 325 E. 10th Street, Halstead, Kansas 67056

BALER BELTING

* DESIGNATE LACING CHOICE AFTER PART NUMBER												
1 = FLEXCO RIVET LACING					Available for Upper and Lower Balers 14" Wide or Narrower							
2 = CLIPPER LACING					Available for Upper and Lower Balers							
3 = FLEXCO 125 STAPLE LACE					Available for Upper and Lower Balers							
4 = 2-A MINET LACING					Available for Upper and Lower Balers							
ROUND BALER BELT					* PART NUMBERS							
MAKE &	BELT	BELT	#	LEGG	SPECIFY CONSTRUCTION							
MODEL	DESCR-	SIZE	Belts	COMPANY	2ply	2ply	3ply	3ply	3ply	3ply	3ply	
	PTION	INCHES		PART #	SM	MRT	SM	MRT	RT	Chev	DT	
CNH - CASE / IH												
RBX441												
86616064	Upper	7 x 272.5	6	NH750-A	F	FM	N	NM	NR	NC	ND	
RBX451												
86616065	Upper	7 x 343	6	NH751-A	F	FM	N	NM	NR	NC	ND	
RBX461												
86616066	Upper	7 x 420.5	6	NH752-A	F	FM	N	NM	NR	NC	ND	
RBX 561												
86616066	Upper	7 x 420.5	8	NH752-A	F	FM	N	NM	NR	NC	ND	
CLAAS												
Rollaut 180												
	Upper	8.66 x 500	5	UN799-A	F	FM	N	NM	NR	NC	ND	
FORD / NEW HOLLAND												
551												
GH-059802	Outer	6 x 450	2	UN725-A	F	FM	N	NM	NR	NC	ND	
GH-066548	Inner	5 x 450	3	UN726-A	F	FM	N	NM	NR	NC	ND	
551 Lower 2ply Belts W/V-GUIDE												
GH-066548	Lower	44.25 x 56.5	1	UN703-A	F	-	-	-	-	C	-	
GH-066556	Lower	44.25 x 69.5	1	UN701-A	F	-	-	-	-	C	-	
552												
GH-059800	Upper	6 x 466	6	UN775-A	F	FM	N	NM	NR	NC	ND	
552 Lower 2ply Belts W/V-GUIDE												
GH-056580	Lower	60 x 96	1	UN702-A	F	-	-	-	-	C	-	
630-634-638												
86625675	Upper	7 x 272.5	6	NH750-A	F	FM	N	NM	NR	NC	ND	
640-644-648-678 (Model 678 has 8 Belts)												
9843314 / 86642411		7 x 343	6	NH751-A	F	FM	N	NM	NR	NC	ND	
650-654-658												
86642412 / 86556992		7 x 420.5	6	NH752-A	F	FM	N	NM	NR	NC	ND	
660-664-668-688												
86642412 / 86556992		7 x 420.5	8	NH752-A	F	FM	N	NM	NR	NC	ND	
GEHL												
1400												
68254	Outer	6 x 450	2	UN725-A	F	FM	N	NM	-	-	-	
66548	Inner	5 x 450	3	UN726-A	F	FM	N	NM	-	-	-	

For more information go to www.leggbelting.com or call toll free 800-835-1003 and ask for agricultural sales

BALER BELTING

* DESIGNATE LACING CHOICE AFTER PART NUMBER												
1 = FLEXCO RIVET LACING					Available for Upper and Lower Balers 14" Wide or Narrower							
2 = CLIPPER LACING					Available for Upper and Lower Balers							
3 = FLEXCO 125 STAPLE LACE					Available for Upper and Lower Balers							
4 = 2-A MINET LACING					Available for Upper and Lower Balers							
ROUND BALER BELT					* PART NUMBERS							
MAKE &	BELT	BELT	#	LEGG	SPECIFY CONSTRUCTION							
MODEL	DESCR-	SIZE	Belts	COMPANY	2ply	2ply	3ply	3ply	3ply	3ply	3ply	
	PTION	INCHES		PART #	SM	MRT	SM	MRT	RT	Chev	DT	
GEHL CONTINUED												
1400 - 1440 - 1450 Lower 2ply Belts W/V-GUIDE												
69784	Lower	44.25 x 56.5	1	UN703-A	F	-	-	-	-	-	-	
66556	Lower	44.25 x 69.5	1	UN701-A	F	-	-	-	-	-	-	
1450-1460												
120811	Upper	6 x 462.5	5	GB760-A	F	FM	N	NM	-	-	-	
1465-1470 EARLY MODELS												
84681	Upper	6 x 462.5	6	GB760-A	F	FM	N	NM	-	-	-	
1470 NEWER MODELS												
125951	Upper	6 x 463	6	UN724-A	F	FM	N	NM	-	-	-	
1475												
119476	Upper	6 x 469	6	UN723-A	F	FM	N	NM	-	-	-	
1500												
56479	Upper	4 x 466	9	GB750-A	F	FM	N	NM	-	-	-	
(Optional)	Upper	10 x 466		GB751-A	F	FM	N	NM	-	-	-	
1500A - 1600												
120812	Upper	6 x 466	6	UN775-A	F	FM	N	NM	-	-	-	
1500 - 1500A - 1600 Lower 2ply Belts W/V-GUIDE												
56480	Lower	60 x 96	1	UN702-A	F	-	-	-	-	-	-	
1850 - 1860												
120813	Upper	6 x 546	7	GB765-A	F	FM	N	NM	-	-	-	
1850 ONLY Lower 2ply Belts W/V-GUIDE												
74727	Lower	60 x 56.5	1	GB705-A	F	-	-	-	-	-	-	
1865 - 1870												
84722 / 125952		6 x 546	8	GB765-A	F	FM	N	NM	NR	NC	ND	
1875												
119477	Upper	6 x 552	8	UN748-A	F	FM	N	NM	NR	NC	ND	
2480												
156649	Upper	6 x 468.5	6	GB761-A	F	FM	N	NM	NR	NC	ND	
2580												
155501	Upper	6.5 x 502.5	2	GB776-A	F	FM	N	NM	NR	NC	ND	
155500		6.5 x 474.5	4	GB774-A	F	FM	N	NM	NR	NC	ND	
2680												
155503	Upper	6.5 x 556.5	2	GB777-A	F	FM	N	NM	NR	NC	ND	
155505		6.5 x 577.5	4	GB778-A	F	FM	N	NM	NR	NC	ND	
For more information go to www.leggbelting.com or call toll free 800-835-1003 and ask for agricultural sales												



TO ORDER CALL FREE: 1-800-835-1003
FREE IN KANSAS: 1-866-830-1003
 1-316-835-2256 • FAX: 1-316-835-3218

LEGG COMPANY, INC., 325 E. 10th Street, Halstead, Kansas 67056

BALER BELTING

* DESIGNATE LACING CHOICE AFTER PART NUMBER												
1 = FLEXCO RIVET LACING					Available for Upper and Lower Balers 14" Wide or Narrower							
2 = CLIPPER LACING					Available for Upper and Lower Balers							
3 = FLEXCO 125 STAPLE LACE					Available for Upper and Lower Balers							
4 = 2-A MINET LACING					Available for Upper and Lower Balers							
ROUND BALER BELT					* PART NUMBERS							
MAKE &	BELT	BELT	#	LEGG	SPECIFY CONSTRUCTION							
MODEL	DESCR-	SIZE	Belts	COMPANY	2ply	2ply	3ply	3ply	3ply	3ply	3ply	
	PTION	INCHES		PART #	SM	MRT	SM	MRT	RT	Chev	DT	
GEHL CONTINUED												
2780												
156649	Upper	6 x 468.5	8	GB761-A	F	FM	N	NM	NR	NC	ND	
2880												
155503	Upper	6.5 x 556.5	4	GB777-A	F	FM	N	NM	NR	NC	ND	
155505		6.5 x 577.5	4	GB778-A	F	FM	N	NM	NR	NC	ND	
HESSTON / AGCO												
514												
	Upper	11 x 73.25	25	UN768-A	-	-	N	NM	NR	NC	ND	
	Lower	11 x 121.25	5	UN774-A	-	-	N	NM	NR	NC	ND	
530 - 5530 - 830												
700700802	Upper	4.8 x 364	5	UN710-A	-	-	N	NM	NR	NC	ND	
540 - 740 - 840												
700709185	Upper	7 x 366	6	UN796-A	-	-	N	NM	NR	NC	ND	
545												
700714815	Upper	7 x 471.5	6	UN730-A	-	-	N	NM	NR	NC	ND	
550												
700707162	Upper	7 x 570	4	UN797-A	-	-	N	NM	NR	NC	ND	
700708740	Upper	6.5 x 572.5	2	UN798-A	-	-	N	NM	NR	NC	ND	
555												
700709999	Upper	7 x 562.5	6	UN756-A	-	-	N	NM	NR	NC	ND	
550 - 555 STARTER FLAPS												
700711998		3.5 x 46.22	4	UN708-A	-	-	N	-	-	-	-	
560 OLDER MODELS WITH SERIAL NUMBERS FROM 0220 TO 1964												
700707162	Upper	7 x 570	6	UN797-A	-	-	N	NM	NR	NC	ND	
700708740	Upper	6.5 x 572.5	2	UN798-A	-	-	N	NM	NR	NC	ND	
560 NEWER MODELS WITH SERIAL NUMBERS FROM 1965 AND UP												
700709999	Upper	7 x 562.5	8	UN756-A	-	-	N	NM	NR	NC	ND	
565												
700709999	Upper	7 x 562.5	8	UN756-A	-	-	N	NM	NR	NC	ND	
560 - 565 STARTER FLAPS												
700711997		3.5 x 61.18	4	UN709-A	-	-	N	-	-	-	-	
845												
700716049	Upper	7 x 475	6	UN731-A	-	-	N	NM	NR	NC	ND	

For more information go to www.leggbelting.com or call toll free 800-835-1003 and ask for agricultural sales



TO ORDER CALL FREE: 1-800-835-1003
FREE IN KANSAS: 1-866-830-1003
 1-316-835-2256 • FAX: 1-316-835-3218

LEGG COMPANY, INC., 325 E. 10th Street, Halstead, Kansas 67056

BALER BELTING

* DESIGNATE LACING CHOICE AFTER PART NUMBER												
1 = FLEXCO RIVET LACING					Available for Upper and Lower Balers 14" Wide or Narrower							
2 = CLIPPER LACING					Available for Upper and Lower Balers							
3 = FLEXCO 125 STAPLE LACE					Available for Upper and Lower Balers							
4 = 2-A MINET LACING					Available for Upper and Lower Balers							
ROUND BALER BELT					* PART NUMBERS							
MAKE &	BELT	BELT	#	LEGG	SPECIFY CONSTRUCTION							
MODEL	DESCR-	SIZE	Belts	COMPANY	2ply	2ply	3ply	3ply	3ply	3ply	3ply	
	PTION	INCHES		PART #	SM	MRT	SM	MRT	RT	Chev	DT	
HESSTON / AGCO CONTINUED												
845 STARTER FLAPS												
700716010		3.5 x 43.31	4	UN704-A	-	-	N	-	-	-	-	
855												
700716049	Upper	7 x 475	8	UN731-A	-	-	N	NM	NR	NC	ND	
855 STARTER FLAPS												
700717111		3.5 x 58.50	4	UN705-A	-	-	N	-	-	-	-	
846 / A												
700717717	Upper	7 x 547	6	UN754-A	-	-	N	NM	NR	NC	ND	
846 STARTER FLAPS												
700716010		3.5 x 43.31	4	UN704-A	-	-	N	-	-	-	-	
856 / A												
700717717	Upper	7 x 547	8	UN754-A	-	-	N	NM	NR	NC	ND	
856 STARTER FLAPS												
700717714		3.5 x 58.50	4	UN705-A	-	-	N	-	-	-	-	
5400 WITH HOLES												
728733	Upper	4 x 127	9	HE725-A	F	FM	N	NM	NR	NC	ND	
5500 - 5510 WITH HOLES												
700702917	Upper	4 x 452	9	UN712-A	F	FM	N	NM	NR	NC	ND	
5530												
	Upper	4.8 x 364	5	UN710-A	-	-	N	NM	NR	NC	ND	
5540												
828335	Upper	5.3 x 470	6	UN740-A	-	-	N	NM	NR	NC	ND	
5545												
700703532	Upper	5.3 x 465	6	UN741-A	-	-	N	NM	NR	NC	ND	
5580												
828335	Upper	5.3 x 470	8	UN740-A	-	-	N	NM	NR	NC	ND	
5585												
700703532	Upper	5.3 x 465	8	UN741-A	-	-	N	NM	NR	NC	ND	
5600												
728758	Upper	4 x 400	9	UN750-A	F	FM	N	NM	NR	NC	ND	
	Upper	10 x 400		UN751-A	F	FM	N	NM	NR	NC	ND	
5600 Lower 2ply Belts W/V-GUIDE												
728931		60 x 120	1	UN700-A	F	-	-	-	-	C	-	
5800 KIT IS REQUIRED FOR THE 10" BELTS												
7827991	Upper	4 x 480	9	HE775-A	F	FM	N	NM	NR	NC	ND	
	Upper	10 x 480		HE776-A	F	FM	N	NM	NR	NC	ND	

For more information go to www.leggbelting.com or call toll free 800-835-1003 and ask for agricultural sales

BALER BELTING

* DESIGNATE LACING CHOICE AFTER PART NUMBER

1 = FLEXCO RIVET LACING	Available for Upper and Lower Balers 14" Wide or Narrower
2 = CLIPPER LACING	Available for Upper and Lower Balers
3 = FLEXCO 125 STAPLE LACE	Available for Upper and Lower Balers
4 = 2-A MINET LACING	Available for Upper and Lower Balers

ROUND BALER BELT

* PART NUMBERS

MAKE &	BELT	BELT	#	LEGG	SPECIFY CONSTRUCTION						
MODEL	DESCR-	SIZE	Belts	COMPANY	2ply	2ply	3ply	3ply	3ply	3ply	3ply
	PTION	INCHES		PART #	SM	MRT	SM	MRT	RT	Chev	DT

JOHN DEERE

410 KIT IS REQUIRED FOR THE 12" BELTS

AE35930	Upper	4 x 415	6	LJD725-A	F	FM	N	NM	NR	NC	ND
	Upper	10 x 415		LJD726-A	F	FM	N	NM	NR	NC	ND
AE41723	Upper	12 x 417.5		LJD727-A	F	FM	N	NM	NR	NC	ND
AE37525	Lower	8 x 74.5	5	LJD708-A	F	FM	N	NM	NR	NC	ND

POPULAR BELT MODIFICATION: (2) 4" x 415" INSIDE and (2) 10" x 415" OUTSIDE

500

AE33990	Upper	4 x 422	9	LJD750-A	F	FM	N	NM	NR	NC	ND
	Upper	10 x 422		LJD751-A	F	FM	N	NM	NR	NC	ND

500 Lower 2ply Belts W/V-GUIDE

AE58838	Lower	60 x 138	1	LJD700-A	F	-	-	-	-	C	-
---------	-------	----------	---	----------	---	---	---	---	---	---	---

POPULAR BELT MODIFICATION: (5) 4" x 422" INSIDE and (2) 10" x 422" OUTSIDE

510 KIT IS REQUIRED FOR THE 12" BELTS

AE35484	Upper	4 x 484	9	LJD775-A	F	FM	N	NM	NR	NC	ND
	Upper	10 x 484		LJD776-A	F	FM	N	NM	NR	NC	ND
AE37525	Upper	12 x 486.5		LJD777-A	F	FM	N	NM	NR	NC	ND
AE37525	Lower	8 x 74.5	7	LJD708-A	F	FM	N	NM	NR	NC	ND

POPULAR BELT MODIFICATION: (5) 4" x 4484" INSIDE and (2) 10" x 484" OUTSIDE

330 - 335 - 446 - 447

AE53286	Upper	7 x 402.75	2	LJD760-A	-	-	N	NM	NR	NC	ND
AE53287	Upper	7 x 410.75	4	LJD761-A	-	-	N	NM	NR	NC	ND

375 - 546 - 547

AE53286	Upper	7 x 402.75	4	LJD760-A	-	-	N	NM	NR	NC	ND
AE53287	Upper	7 x 410.75	4	LJD761-A	-	-	N	NM	NR	NC	ND

385 - 456 - 457 - 456 Silage

AE53288	Upper	7 x 461	2	LJD765-A	-	-	N	NM	NR	NC	ND
AE53289	Upper	7 x 466.5	4	LJD766-A	-	-	N	NM	NR	NC	ND

556 - 557

AE53288	Upper	7 x 461	4	LJD765-A	F	FM	N	NM	NR	NC	ND
AE53289	Upper	7 x 466.5	4	LJD766-A	F	FM	N	NM	NR	NC	ND

430 - 435 - 466 - 467

AE53287	Upper	7 x 525	2	LJD735-A	-	-	N	NM	NR	NC	ND
AE53288	Upper	7 x 531	4	LJD736-A	-	-	N	NM	NR	NC	ND

530 - 535 - 566 - 567

AE53287	Upper	7 x 525	4	LJD735-A	-	-	N	NM	NR	NC	ND
AE53288	Upper	7 x 531	4	LJD736-A	-	-	N	NM	NR	NC	ND

For more information go to www.leggbelting.com or call toll free 800-835-1003 and ask for agricultural sales

BALER BELTING

* DESIGNATE LACING CHOICE AFTER PART NUMBER

1 = FLEXCO RIVET LACING	Available for Upper and Lower Balers 14" Wide or Narrower
2 = CLIPPER LACING	Available for Upper and Lower Balers
3 = FLEXCO 125 STAPLE LACE	Available for Upper and Lower Balers
4 = 2-A MINET LACING	Available for Upper and Lower Balers

ROUND BALER BELT

* PART NUMBERS

MAKE &	BELT	BELT	#	LEGG	SPECIFY CONSTRUCTION						
MODEL	DESCR-	SIZE	Belts	COMPANY	2ply	2ply	3ply	3ply	3ply	3ply	3ply
	IPTION	INCHES		PART #	SM	MRT	SM	MRT	RT	Chev	DT

MASSEY FERGUSON

450

1047868M93	Upper	4 x 388	8	UN715-A	F	FM	N	NM	NR	NC	ND
	Upper	9 x 388		UN716-A	F	FM	N	NM	NR	NC	ND

450 Lower 2ply Belts W/V-GUIDE

	Lower	60 x 120	1	UN700-A	F	-	-	-	-	C	-
--	-------	----------	---	---------	---	---	---	---	---	---	---

560

1045352M93	Upper	4 x 440	9	UN735-A	F	FM	N	NM	NR	NC	ND
1096895M91	Upper	10 x 440		UN736-A	F	FM	N	NM	NR	NC	ND

**POPULAR BELT MODIFICATION: (5) 4" x 440" INSIDE and (2) 10" x 440" OUTSIDE
OR (4) 10" x 440" OUTSIDE AND (1) 4" x 440" IN THE MIDDLE**

634

	Upper	6 x 428	4	UN794-A	F	FM	N	NM	NR	NC	ND
--	-------	---------	---	---------	---	----	---	----	----	----	----

645

	Upper	6.5 x 528	6	UN795-A	F	FM	N	NM	NR	NC	ND
--	-------	-----------	---	---------	---	----	---	----	----	----	----

656

	Upper	6.5 x 528	8	UN795-A	F	FM	N	NM	NR	NC	ND
--	-------	-----------	---	---------	---	----	---	----	----	----	----

822

	Upper-Front	6.4 x 187.8	6	MF750-A	F	FM	N	NM	NR	NC	ND
	Upper-Rear	6.4 x 226.8	6	MF751-A	F	FM	N	NM	NR	NC	ND

825

	Upper	6 x 463	6	UN724-A	F	FM	N	NM	NR	NC	ND
--	-------	---------	---	---------	---	----	---	----	----	----	----

828

	Upper-Front	6.4 x 211.42	6	MF752-A	F	FM	N	NM	NR	NC	ND
	Upper-Rear	6.4 x 306.3	6	MF753-A	F	FM	N	NM	NR	NC	ND

834 - 838

	Upper-Front	6.4 x 211.42	8	MF752-A	F	FM	N	NM	NR	NC	ND
	Upper-Rear	6.4 x 306.3	8	MF753-A	F	FM	N	NM	NR	NC	ND

835

	Upper	6 x 545.5	8	UN747-A	F	FM	N	NM	NR	NC	ND
--	-------	-----------	---	---------	---	----	---	----	----	----	----

1440-1450

1059229M91	Upper	4 x 436	8	UN780-A	F	FM	N	NM	NR	NC	ND
1059230M91	Upper	10 x 437		UN782-A	F	FM	N	NM	NR	NC	ND

POPULAR BELT MODIFICATION: (4) 4" x 436" INSIDE and (2) 10" x 436" OUTSIDE

1455

1059229M91	Upper	4 x 436	8	UN780-A	F	FM	N	NM	NR	NC	ND
	Upper	9 x 437		UN781-A	F	FM	N	NM	NR	NC	ND

For more information go to www.leggbelting.com or call toll free 800-835-1003 and ask for agricultural sales

BALER BELTING

* DESIGNATE LACING CHOICE AFTER PART NUMBER

1 = FLEXCO RIVET LACING	Available for Upper and Lower Balers 14" Wide or Narrower
2 = CLIPPER LACING	Available for Upper and Lower Balers
3 = FLEXCO 125 STAPLE LACE	Available for Upper and Lower Balers
4 = 2-A MINET LACING	Available for Upper and Lower Balers

ROUND BALER BELT

* PART NUMBERS

MAKE &	BELT	BELT	#	LEGG	SPECIFY CONSTRUCTION						
MODEL	DESCR-	SIZE	Belts	COMPANY	2ply	2ply	3ply	3ply	3ply	3ply	3ply
	IPTION	INCHES		PART #	SM	MRT	SM	MRT	RT	Chev	DT

MASSEY FERGUSON CONTINUED

1500 - 1560

	Upper	4 x 512	6	UN745-A	F	FM	N	NM	NR	NC	ND
	Upper	10 x 514	2	UN746-A	F	FM	N	NM	NR	NC	ND
	Upper	9 x 514	3	UN743-A	F	FM	N	NM	NR	NC	ND

POPULAR BELT MODIFICATION: (3) 9" x 514" INSIDE and (2) 10 x 514" OUTSIDE

1565

	Upper	4 x 512	6	UN745-A	F	FM	N	NM	NR	NC	ND
	Upper	9 x 514	2	UN743-A	F	FM	N	NM	NR	NC	ND

1440 - 1450 - 1455 STARTER FLAPS

		3 x 43.625	4	UN706-A	-	-	N	-	-	-	-
--	--	------------	---	---------	---	---	---	---	---	---	---

1550 - 1560 - 1565 STARTER FLAPS

		3 x 58.625	4	UN707-A	-	-	N	-	-	-	-
--	--	------------	---	---------	---	---	---	---	---	---	---

McKEE

875

	Upper	4.75 x 64.75	45	UN790-A	F	FM	N	NM	NR	NC	ND
	Lower	7 x 104.5	6	UN792-A	F	FM	N	NM	NR	NC	ND

1500 - 1578

	Upper	4.75 x 73.25	55	UN776-A	F	FM	N	NM	NR	NC	ND
	Lower	11 x 121.25	5	UN774-A	F	FM	N	NM	NR	NC	ND

NEW IDEA

483

105003	Upper	11 x 73.25	12	UN768-A	F	FM	N	NM	NR	NC	ND
104712	Lower	11 x 103.5	4	UN772-A	F	FM	N	NM	NR	NC	ND

484 EARLY MODELS

104412	Upper	4.75 x 73.25	30	UN776-A	F	FM	N	NM	NR	NC	ND
104407	Lower	11 x 103.5	5	UN772-A	F	FM	N	NM	NR	NC	ND

484 NEWER MODELS

105005	Upper	11 x 73.25	15	UN768-A	F	FM	N	NM	NR	NC	ND
104467	Lower	11 x 103.5	5	UN772-A	F	FM	N	NM	NR	NC	ND

485 - 4855

105003	Upper	11 x 73.25	20	UN768-A	F	FM	N	NM	NR	NC	ND
104108	Lower	11 x 121.25	4	UN774-A	F	FM	N	NM	NR	NC	ND

456 - 486 - 4865

104107	Upper	4.75 x 73.25	55	UN776-A	F	FM	N	NM	NR	NC	ND
105003	Upper	11 x 73.25	25	UN768-A	F	FM	N	NM	NR	NC	ND
104108	Lower	11 x 121.25	5	UN774-A	F	FM	N	NM	NR	NC	ND

For more information go to www.leggbelting.com or call toll free 800-835-1003 and ask for agricultural sales

BALER BELTING

* DESIGNATE LACING CHOICE AFTER PART NUMBER												
1 = FLEXCO RIVET LACING					Available for Upper and Lower Balers 14" Wide or Narrower							
2 = CLIPPER LACING					Available for Upper and Lower Balers							
3 = FLEXCO 125 STAPLE LACE					Available for Upper and Lower Balers							
4 = 2-A MINET LACING					Available for Upper and Lower Balers							
ROUND BALER BELT					* PART NUMBERS							
MAKE &	BELT	BELT	#	LEGG	SPECIFY CONSTRUCTION							
MODEL	DESCR-	SIZE	Belts	COMPANY	2ply	2ply	3ply	3ply	3ply	3ply	3ply	
	PTION	INCHES		PART #	SM	MRT	SM	MRT	RT	Chev	DT	
NEW IDEA CONTINUED												
4643 - 6343												
700700802	Upper	4.8 x 364	5	UN710-A	F	FM	N	NM	NR	NC	ND	
4644 - 6344												
700709185	Upper	7 x 366	6	UN796-A	F	FM	N	NM	NR	NC	ND	
4664												
700709999	Upper	7 x 562.5	6	UN756-A	-	-	N	NM	NR	NC	ND	
4665												
700709999	Upper	7 x 562.5	8	UN756-A	-	-	N	NM	NR	NC	ND	
6345												
700716049	Upper	7 x 475	6	UN731-A	F	FM	N	NM	NR	NC	ND	
6364 (6) Belts 6365 (8) Belts												
700717717	Upper	7 x 547		UN754-A	-	-	N	NM	NR	NC	ND	
RENN												
121												
	Upper	4 x 465	4	UN760-A	F	FM	N	NM	NR	NC	ND	
	Upper	9 x 465	2	UN761-A	F	FM	N	NM	NR	NC	ND	
151												
	Upper	4 x 465	6	UN760-A	F	FM	N	NM	NR	NC	ND	
	Upper	9 x 465	2	UN761-A	F	FM	N	NM	NR	NC	ND	
VERMEER - Legg Co. recommends use of 3ply belts on all Vermeer Balers												
403F - 403G												
	Upper	4 x 358	6	VR710-A	-	-	N	NM	NR	NC	ND	
	Upper	9 x 358		VR711-A	-	-	N	NM	NR	NC	ND	
503I												
	Upper	6 x 428	4	UN794-A	-	-	N	NM	NR	NC	ND	
504C												
	Upper	4 x 388	8	UN715-A	-	-	N	NM	NR	NC	ND	
	Upper	9 x 388		UN716-A	-	-	N	NM	NR	NC	ND	
POPULAR BELT MODIFICATION: (4) 4" x 388" INSIDE and (2) 9 x 388" OUTSIDE												
504F - G												
	Upper	4 x 436	8	UN780-A	-	-	N	NM	NR	NC	ND	
	Upper	10 x 437		UN782-A	-	-	N	NM	NR	NC	ND	
For more information go to www.leggbelting.com or call toll free 800-835-1003 and ask for agricultural sales												



TO ORDER CALL FREE: 1-800-835-1003
FREE IN KANSAS: 1-866-830-1003
 1-316-835-2256 • FAX: 1-316-835-3218

LEGG COMPANY, INC., 325 E. 10th Street, Halstead, Kansas 67056

BALER BELTING

* DESIGNATE LACING CHOICE AFTER PART NUMBER

1 = FLEXCO RIVET LACING	Available for Upper and Lower Balers 14" Wide or Narrower
2 = CLIPPER LACING	Available for Upper and Lower Balers
3 = FLEXCO 125 STAPLE LACE	Available for Upper and Lower Balers
4 = 2-A MINET LACING	Available for Upper and Lower Balers

ROUND BALER BELT

* PART NUMBERS

MAKE &	BELT	BELT	#	LEGG	SPECIFY CONSTRUCTION						
MODEL	DESCR-	SIZE	Belts	COMPANY	2ply	2ply	3ply	3ply	3ply	3ply	3ply
	PTION	INCHES		PART #	SM	MRT	SM	MRT	RT	Chev	DT

VERMEER CONTINUED - Legg Co. recommends use of 3ply belts on all Vermeer Balers

504H											
	Upper	4 x 436	8	UN780-A	-	-	N	NM	NR	NC	ND
	Upper	9 x 437		UN781-A	-	-	N	NM	NR	NC	ND
504I - 504IS - 504L/LS - 5400 REBEL											
	Upper	6 x 424	6	VR750-A	-	-	N	NM	NR	NC	ND
	Upper	14 x 424		VR751-A	-	-	N	NM	NR	NC	ND
505I - 505L											
	Upper	6 x 424	8	VR750-A	-	-	N	NM	NR	NC	ND
	Upper	14 x 424		VR751-A	-	-	N	NM	NR	NC	ND
554XL											
	Upper	6 x 450	2	UN725-A	-	-	N	NM	NR	NC	ND
	Upper	14 x 450	2	VR752-A	-	-	N	NM	NR	NC	ND
555XL											
	Upper	6 x 450	2	UN725-A	-	-	N	NM	NR	NC	ND
	Upper	14 x 450	3	VR752-A	-	-	N	NM	NR	NC	ND
604J											
	Upper	6.5 x 528	6	UN795-A	-	-	N	NM	NR	NC	ND
604K - 604L - 604XL											
	Upper	6.5 x 528	6	UN795-A	-	-	N	NM	NR	NC	ND
	Upper	14 x 528	3	VR763-A	-	-	N	NM	NR	NC	ND
605A											
	Upper	4 x 400	9	UN750-A	-	-	N	NM	NR	NC	ND
	Upper	10 x 400		UN751-A	-	-	N	NM	NR	NC	ND
605B											
	Upper	4 x 388	9	UN715-A	-	-	N	NM	NR	NC	ND
	Upper	10 x 388		VR741-A	-	-	N	NM	NR	NC	ND
POPULAR BELT MODIFICATION TO THE 605A - B - C - D AND E BALERS:											
(5) 4" BELTS INSIDE AND (2) 10" BELTS ON THE OUTSIDE.											
OR (4) 10" x 440" OUTSIDE AND (1) 4" x 440" IN THE MIDDLE											
605A - 605B Lower 2ply Belts W/V-GUIDE											
	Lower	60 x 120	1	UN700-A	F	-	-	-	-	C	-
605C											
	Upper	4 x 440	9	UN735-A	-	-	N	NM	NR	NC	ND
	Upper	10 x 440		UN736-A	-	-	N	NM	NR	NC	ND
605D											
	Upper	4 x 450	9	VR725-A	-	-	N	NM	NR	NC	ND
	Upper	10 x 450		VR726-A	-	-	N	NM	NR	NC	ND

For more information go to www.leggbelting.com or call toll free 800-835-1003 and ask for agricultural sales

BALER BELTING

* DESIGNATE LACING CHOICE AFTER PART NUMBER											
1 = FLEXCO RIVET LACING					Available for Upper and Lower Balers 14" Wide or Narrower						
2 = CLIPPER LACING					Available for Upper and Lower Balers						
3 = FLEXCO 125 STAPLE LACE					Available for Upper and Lower Balers						
4 = 2-A MINET LACING					Available for Upper and Lower Balers						
ROUND BALER BELT					* PART NUMBERS						
MAKE &	BELT	BELT	#	LEGG	SPECIFY CONSTRUCTION						
MODEL	DESCR-	SIZE	Belts	COMPANY	2ply	2ply	3ply	3ply	3ply	3ply	3ply
	PTION	INCHES		PART #	SM	MRT	SM	MRT	RT	Chev	DT
VERMEER CONTINUED - Legg Co. recommends use of 3ply belts on all Vermeer Balers											
605E - ORIGINAL											
	Upper	4 x 457	5	VR755-A	-	-	N	NM	NR	NC	ND
	Upper	10 x 457	2	VR756-A	-	-	N	NM	NR	NC	ND
605E - MODIFIED											
	Upper	4 x 440	9	UN735-A	-	-	N	NM	NR	NC	ND
	Upper	10 x 440		UN736-A	-	-	N	NM	NR	NC	ND
605F - G											
	Upper	4 x 512	6	UN745-A	-	-	N	NM	NR	NC	ND
	Upper	9 x 514	3	UN743-A	-	-	N	NM	NR	NC	ND
	Upper	10 x 514	2	UN746-A	-	-	N	NM	NR	NC	ND
POPULAR BELT MODIFICATION: (3) 9" x 514" INSIDE and (2) 10 x 514" OUTSIDE											
605H											
	Upper	4 x 512	6	UN745-A	-	-	N	NM	NR	NC	ND
	Upper	9 x 514	2	UN743-A	-	-	N	NM	NR	NC	ND
	Upper	9 x 514	3	UN743-A	-	-	N	NM	NR	NC	ND
POPULAR BELT MODIFICATION: (5) 9" x 514" BELTS INSIDE AND OUTSIDE											
605J											
	Upper	6.5 x 528	8	UN795-A	-	-	N	NM	NR	NC	ND
605J WITH TRACTION ROLLER											
	Upper	6.5 x 542	8	VR760-A	-	-	N	NM	NR	NC	ND
605K - 605L - 605XL											
	Upper	6.5 x 528	2	UN795-A	-	-	N	NM	NR	NC	ND
	Upper	14 x 528	3	VR763-A	-	-	N	NM	NR	NC	ND
706A											
	Upper	4 x 493	11	VR775-A	-	-	N	NM	NR	NC	ND
	Upper	10 x 493		VR776-A	-	-	N	NM	NR	NC	ND
706C											
	Upper	4 x 541	12	VR780-A	-	-	N	NM	NR	NC	ND
	Upper	10 x 541		VR781-A	-	-	N	NM	NR	NC	ND
403F - G STARTER FLAPS											
		3 x 32.63	4	VR326-A	-	-	N	-	-	-	-
504F - G - H STARTER FLAPS											
		3 x 43.63	4	VR436-A	-	-	N	-	-	-	-
605F - G - H STARTER FLAPS											
		3 x 58.63	4	VR586-A	-	-	N	-	-	-	-
For more information go to www.leggbelting.com or call toll free 800-835-1003 and ask for agricultural sales											

BALER BELTING

* DESIGNATE LACING CHOICE AFTER PART NUMBER

1 = FLEXCO RIVET LACING	Available for Upper and Lower Balers 14" Wide or Narrower
2 = CLIPPER LACING	Available for Upper and Lower Balers
3 = FLEXCO 125 STAPLE LACE	Available for Upper and Lower Balers
4 = 2-A MINET LACING	Available for Upper and Lower Balers

ROUND BALER BELT

* PART NUMBERS

MAKE &	BELT	BELT	#	LEGG	SPECIFY CONSTRUCTION						
MODEL	DESCR-	SIZE	Belts	COMPANY	2ply	2ply	3ply	3ply	3ply	3ply	3ply
	IPTION	INCHES		PART #	SM	MRT	SM	MRT	RT	Chev	DT

VICON

260											
	Upper	7 x 64.75	30	VI792-A	F	FM	N	NM	NR	NC	ND
	Lower	7 x 104.5	6	UN792-A	F	FM	N	NM	NR	NC	ND

560											
	Upper	11 x 73.25	25	UN768-A	F	FM	N	NM	NR	NC	ND
	Lower	11 x 121.25	5	UN774-A	F	FM	N	NM	NR	NC	ND

1200											
	Upper	4 x 465	4	UN760-A	F	FM	N	NM	NR	NC	ND
	Upper	9 x 465	2	UN761-A	F	FM	N	NM	NR	NC	ND

RP1210 OLDER AND NEWER MODELS											
	Upper	4.72 x 64.75	45	UN790-A	F	FM	N	NM	NR	NC	ND
	New	7" x 64.75	30	VI792-A	F	FM	N	NM	NR	NC	ND
	Lower	7 x 104.5	6	UN792-A	F	FM	N	NM	NR	NC	ND

RP1211											
	Upper	7.25 x 64.75	25	VI750-A	F	FM	N	NM	NR	NC	ND
	Lower	7.25 x 97	6	VI700-A	F	FM	N	NM	NR	NC	ND

RP1510 OLDER AND NEWER MODELS											
	Upper	4.75 x 73.25	55	UN776-A	F	FM	N	NM	NR	NC	ND
	New	11 x 73.25	25	UN768-A	F	FM	N	NM	NR	NC	ND
	Lower	11 x 121.25	5	UN774-A	F	FM	N	NM	NR	NC	ND

RP1511											
	Upper	11 x 75.75	25	UN769-A	F	FM	N	NM	NR	NC	ND
	Lower	11 x 112	5	UN773-A	F	FM	N	NM	NR	NC	ND

RV1501											
	Upper	8.46 x 403.54	5	VI840-A	F	FM	N	NM	NR	NC	ND

RV1601											
	Upper	8.46 x 421.26	5	VI842-A	F	FM	N	NM	NR	NC	ND

RV1901											
	Upper	8.46 x 472.44	5	VI847-A	F	FM	N	NM	NR	NC	ND

For more information go to www.leggbelting.com or call toll free 800-835-1003 and ask for agricultural sales



TO ORDER CALL FREE: 1-800-835-1003

FREE IN KANSAS: 1-866-830-1003

1-316-835-2256 • FAX: 1-316-835-3218

LEGG COMPANY, INC., 325 E. 10th Street, Halstead, Kansas 67056

ROUND BALER BELT BULK

ROLLS OF BULK BALER BELT	LEGG CO. Part #	2-PLY	2-PLY	3-PLY	3-PLY	3-PLY	3-PLY	3-PLY
		SM	MRT	SM	MRT	RT	Chev	DT
4" WIDE	LG804-A	F	FM	N	NM	NR	NC	ND
4.75" WIDE	LG847-A	F	FM	N	NM	NR	NC	ND
4.8" WIDE	LG848-A	F	FM	N	NM	NR	NC	ND
5" WIDE	LG805-A	F	FM	N	NM	NR	NC	ND
5.3" WIDE	LG853-A	F	FM	N	NM	NR	NC	ND
5.5" WIDE	LG855-A	F	FM	N	NM	NR	NC	ND
6" WIDE	LG806-A	F	FM	N	NM	NR	NC	ND
6.38" WIDE	LG864-A	F	FM	N	NM	NR	NC	ND
6.5" WIDE	LG865-A	F	FM	N	NM	NR	NC	ND
7" WIDE	LG807-A	F	FM	N	NM	NR	NC	ND
7.25" WIDE	LG873-A	F	FM	N	NM	NR	NC	ND
8" WIDE	LG808-A	F	FM	N	NM	NR	NC	ND
9" WIDE	LG809-A	F	FM	N	NM	NR	NC	ND
10" WIDE	LG810-A	F	FM	N	NM	NR	NC	ND
11" WIDE	LG811-A	F	FM	N	NM	NR	NC	ND
12" WIDE	LG812-A	F	FM	N	NM	NR	NC	ND
14" WIDE	LG814-A	F	FM	N	NM	NR	NC	ND

Standard Bulk Roll Lengths are Approx. 500 FT.: Minimum Order Length is 100 FT.

Example Order: LG804AF = 4" 2ply Smooth, LG804ANC = 4" 3-ply Chevron, LG804AND = 4" Diamond Top

REPAIR SECTIONS (5-FOOT LENGTHS)	LEGG CO. Part #	2-PLY	2-PLY	3-PLY	3-PLY	3-PLY	3-PLY	3-PLY
		SM	MRT	SM	MRT	RT	Chev	DT
4" WIDE	LG404-A	F	FM	N	NM	NR	NC	ND
4.75" WIDE	LG447-A	F	FM	N	NM	NR	NC	ND
4.8" WIDE	LG448-A	F	FM	N	NM	NR	NC	ND
5" WIDE	LG405-A	F	FM	N	NM	NR	NC	ND
5.3" WIDE	LG453-A	F	FM	N	NM	NR	NC	ND
5.5" WIDE	LG455-A	F	FM	N	NM	NR	NC	ND
6" WIDE	LG406-A	F	FM	N	NM	NR	NC	ND
6.38" WIDE	LG464-A	F	FM	N	NM	NR	NC	ND
6.5" WIDE	LG465-A	F	FM	N	NM	NR	NC	ND
7" WIDE	LG407-A	F	FM	N	NM	NR	NC	ND
7.25" WIDE	LG473-A	F	FM	N	NM	NR	NC	ND
8" WIDE	LG408-A	F	FM	N	NM	NR	NC	ND
9" WIDE	LG409-A	F	FM	N	NM	NR	NC	ND
10" WIDE	LG410-A	F	FM	N	NM	NR	NC	ND
11" WIDE	LG411-A	F	FM	N	NM	NR	NC	ND
12" WIDE	LG412-A	F	FM	N	NM	NR	NC	ND
14" WIDE	LG414-A	F	FM	N	NM	NR	NC	ND

BELT REPAIR INSTRUCTIONS:

- | | |
|---|--|
| <ol style="list-style-type: none"> 1. It is critical to resize all belts for equal load distribution 2. LEGG CO, INC. offers baler belts in 5 foot lengths for repairs. These repair section should be used to replace a damaged belt Section and return it to proper length. 3. Use FULL repair sections whenever possible | <ol style="list-style-type: none"> 4. Follow lacing instructions in the installation section when making repairs. (IMPORTANT: Do not mix 2-ply and 3-ply constructions. They do not react in the same manner under tension and can create an unequal load situation). |
|---|--|

Be sure to follow all safety and operating instructions to avoid malfunction and or injury



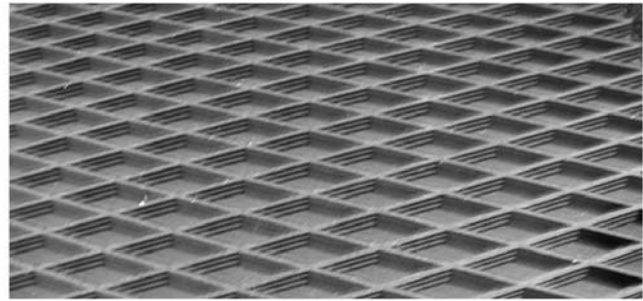
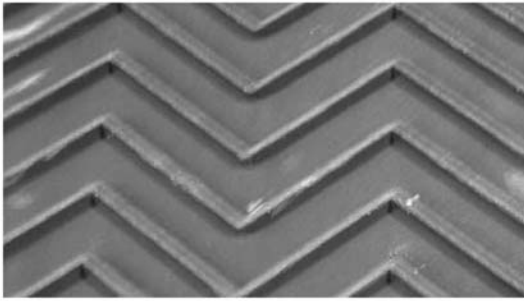
TO ORDER CALL FREE: 1-800-835-1003

FREE IN KANSAS: 1-866-830-1003

1-316-835-2256 • FAX: 1-316-835-3218

LEGG COMPANY, INC., 325 E. 10th Street, Halstead, Kansas 67056

BALER THROWER BELTS



Legg's Premium Bale Thrower Replacement Belting has a 2 ply polyester construction to withstand the high speeds of this application while providing excellent strength and tracking stability. The 1/4 inch high cleats on 4 inch centers are vulcanized as an integral part of the belt. This makes the Legg Bale Thrower Belt the best choice for replacement in today's market.

Available in **CLEATED, DIAMOND TOP, CHEVRON, OR ROUGH TOP**

Make & Model	Belt Description	Belt Size Inches	# belts	Legg CO. Part #	SPECIFY CONSTRUCTION			
					* 2PLY (1/4") CLEATED	2PLY DIAMOND	2PLY CHEVRON	2PLY RT
ALLIS CHALMERS								
44	Bale Thrower	11.5 x 50.5	2	AC500-A	S	D	C	R
FORD/NEW HOLLAND								
	Bale Thrower	12 x 52.25	2	FO500-A	S	D	C	R
HESSTON								
	Bale Thrower	12 x 64.5	2	UN500-A	S	D	C	R
MASSEY FERGUSON								
	Bale Thrower	12 x 64.5	2	UN500-A	S	D	C	R
NEW HOLLAND								
70	Bale Thrower	12 x 81	2	NH500-A	S	D	C	R
72	Bale Thrower	12 x 71.5	2	NH501-A	S	D	C	R
OLIVER								
	Bale Thrower	12 x 64.5	2	UN500-A	S	D	C	R
WELGER								
	Bale Thrower	11.75 x 82	2	WE500-A	S	D	C	R
BULK ROLL MINIMUM ORDER 50 FOOT								
	Bale Thrower			LG512-A	S	D	C	R
* Cleated Belt has 1/4" cleats on 4" Centers								



TO ORDER CALL FREE: 1-800-835-1003
FREE IN KANSAS: 1-866-830-1003
 1-316-835-2256 • FAX: 1-316-835-3218

LEGG COMPANY, INC., 325 E. 10th Street, Halstead, Kansas 67056

INSTALLATION AND CARE INSTRUCTIONS

For upper bands and lower platform aprons.

A few minutes of your time can prevent premature belt failure and costly downtime.



Safety Instructions:

1. Read the operator's manual for any safety procedures to follow.
2. Do not wear loose clothing that could become entangled in the belting or drive system.
3. Be sure all guards and safety devices are in place before and during operation.

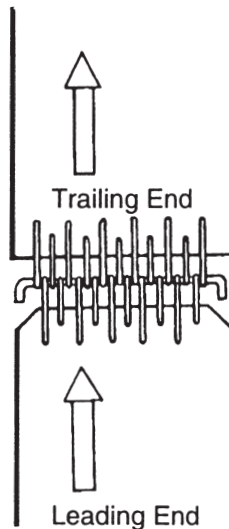
Before installation:

1. Be sure all operational power is turned off.
2. Always use the same ply construction for all belts. 2-ply and 3-ply constructions do not react in the same manner under tension. Use of different ply constructions will create an unequal load situation and the baler will not perform properly.
3. Check all bearings for movement without drag or noise. Lubricate or replace as required.
4. Check for bent or broken rollers and replace as required. Free all rollers of rust and foreign material buildup.
5. Eliminate catch points, weld splatters and sharp metal edges.
6. Replace all worn belts at the same time.
7. Resize all belts, new and old, to equal lengths for maximum load distribution.

Note: Resize all belts between each bailing season.

Installation:

1. Install belt following "DIRECTION OF TRAVEL" arrow. (End with 45° corners and the least number of hooks is the leading end. End with square-cut corners is the trailing end).
2. After threading a belt through the machine, pull ends together. Insert connecting pin through the lacing hooks making sure the hooks on both ends alternate. (Trailing end should have hooks on both outside edges).
3. After inserting the connecting pin completely, bend approximately 1/4" of the straight end at a 90° angle to match the other end.



Installation:

Lower Platform Aprons:

1. Clean V-Guide slot on pulleys. (Note: International Harvester models do not have V-Guides.
2. Install belt following "DIRECTION OF TRAVEL" arrow.
3. After threading belt through machine, pull end together. Make sure hooks on both ends alternate. (Trailing end should have hooks on both outside edges).
4. If Clipper® lacing is used, insert leader wire attached to cable, through hooks. Do not jerk on leader wire or it will come off. After cable is in place, remove leader wire, attach retaining nut and crimp it. If Minet® lacing is used, install pin and bend approximately 1/4" of straight end at a 90° angle.
5. Run baler momentarily to check for proper tracking, adjust as necessary.

1.

Care after Installation:

Take up roller adjustment to recommended tension. (**IMPORTANT:** Check your baler's operating manual for proper tension adjustment. **NOTE:** It is especially important to leave the recommended slack in the belts on Vicon, McKee, New Idea and corresponding Case IH models. A belt adjusted too tight will have a shorter service life).

2. Check your belts, belt lacing, and pin occasionally during use. Make repairs or replacements as required. (**Note: The lacing and connecting pin are your belts' weakest points. Proper maintenance is critical to your baler's overall performance.**)
3. Resize all belts and replace as necessary between seasons. Check your baler thoroughly before starting your next season.
4. Remember **LEGG COMPANY** Baler Belts are specially designed for large round balers. Special materials and quality craftsmanship make **LEGG COMPANY** Baler Belts excellent replacement products that meet or exceed O.E.M. requirements.



CAUTION

Be sure to follow all safety and operating instructions to avoid malfunction and/or injury.

For lacing, tools, and accessories, refer to accessories section